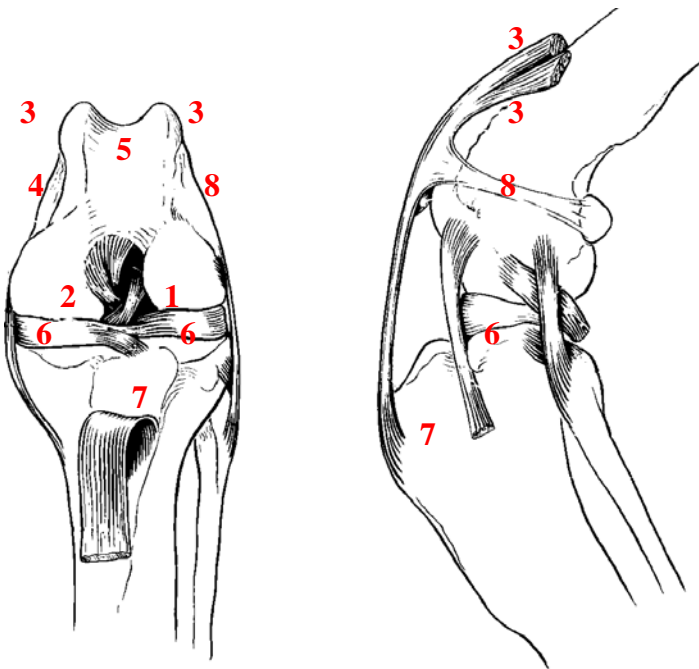




## STIFLE - THE UNSTABLE KNEE

### Some of the things your pet may need corrected:

- Repair Anterior Cruciate Ligament (1)
- Repair Posterior Cruciate Ligament (2)
- Remove arthritic osteophytes (3)
- Tighten the Medial Patellar Ligament (4)
- Regroove the Femoral Trochlea (5)
- Remove damaged cartilage (Meniscus) (6)
- Relocate the Patellar Ligament insertion (7)
- Tighten the Lateral Patellar Ligament (8)



The knee or stifle joint is the most complex joint in the body. This complexity makes it vulnerable to injury though. Dog and cat knees are built almost exactly like human knees. The “football knee” injury in humans is the same as what happens in many pets. In the cat knee injuries are often the result of attacks by dogs or being hit by a car. But in the dog just jumping up and coming down with a twisting motion on one hind leg is enough to break ligaments in the knee. Also, some dogs are born with abnormally configured knees and are therefore vulnerable to damage and arthritis. Usually surgery is the only solution to unstable knees.

### What Are the Advantages of Surgery?

- The knee should be much more stable and functional after the surgery and the healing period than prior to the surgery.
- The long-term odds of debilitating arthritis is decreased substantially with proper joint function.
- After the healing period the knee will be almost as strong as a normal knee.
- Some abnormalities like unstable kneecaps (patellar luxation) predisposes the knee to further damage and even gradual malformation of the bones above and below the knee, leading to a totally non-functional leg. Early surgery will prevent this.

### When should surgery be done?

The earlier the surgery is performed, the better the chances for a fully functional knee. With time, the damage to the knee adds up, so what could have been a simple operation becomes a much more complex one. The more we have to do to repair the knee, the more expense to you, and the longer the healing period and greater the chance for arthritis.

### What kind of care is needed after the surgery?

We treat these pets just like a human who has had major knee surgery—rest for two weeks then gradually more exercise for the next 4–6 months. In the early stages of healing we often use DMSO to control discomfort and swelling. Later aspirin or aspirin substitutes may be helpful (most pets don't need it though). At the end of six months the knee should be back to maximum strength.

*Thank you for this opportunity to serve you!*